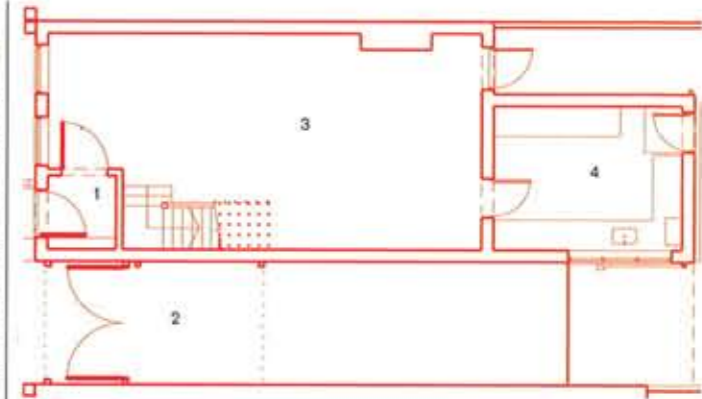
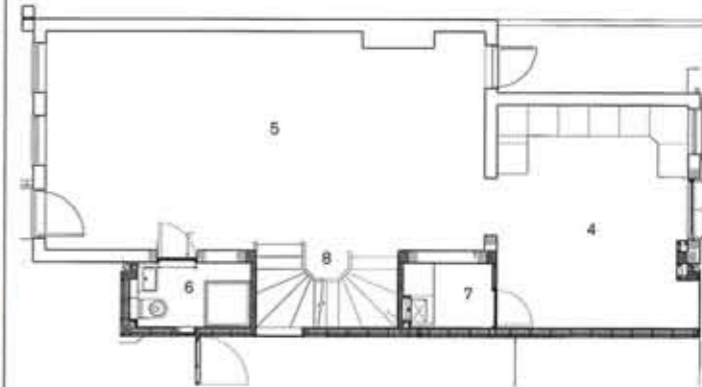


**ELM ROW, KINGSTON-UPON-THAMES**  
**ARCHITECT: WAIND GOHIL ARCHITECTS**  
**COST: £50,000**

The brief for this project was to reconfigure and extend a narrow detached house to provide more living space. The solution was a 1.2m-wide extension over two storeys. It is constructed from a lightweight timber frame and is simply detailed with western red cedar cladding and large areas of glazing. The extension provides a new stair, artist's studio and larger living areas and bedrooms, and accommodates the home's service and storage spaces.



Existing ground floor plan



Proposed ground floor plan

**Far left** The extension is just 1.2m wide **Left** The extension is expressed in western red cedar and planer glazing **Below** It has a gross floor area of 30m<sup>2</sup>

- 1. Porch
- 2. Off-road parking
- 3. Living/dining
- 4. Kitchen
- 5. Living room
- 6. Shower
- 7. Utility
- 8. Stair

